

SAS käyttö MS Sharepointissa

Pietari Koskela
SAS Institute



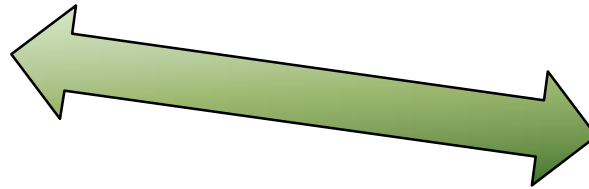
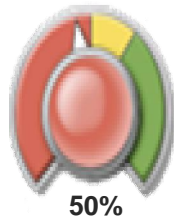
THE
POWER
TO KNOW®

MS Sharepoint - SAS

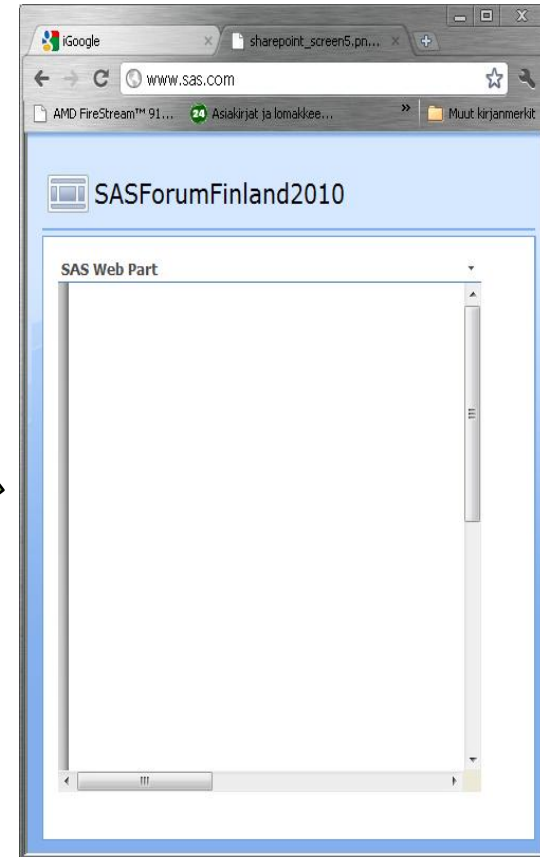


SAS

Istuimia vapaana



- SAS STORED PROCESS WEB PART
- SAS BI DASHBOARD WEB PART



Sharepoint

MS Sharepoint - SAS

SAS Stored Process Web Part

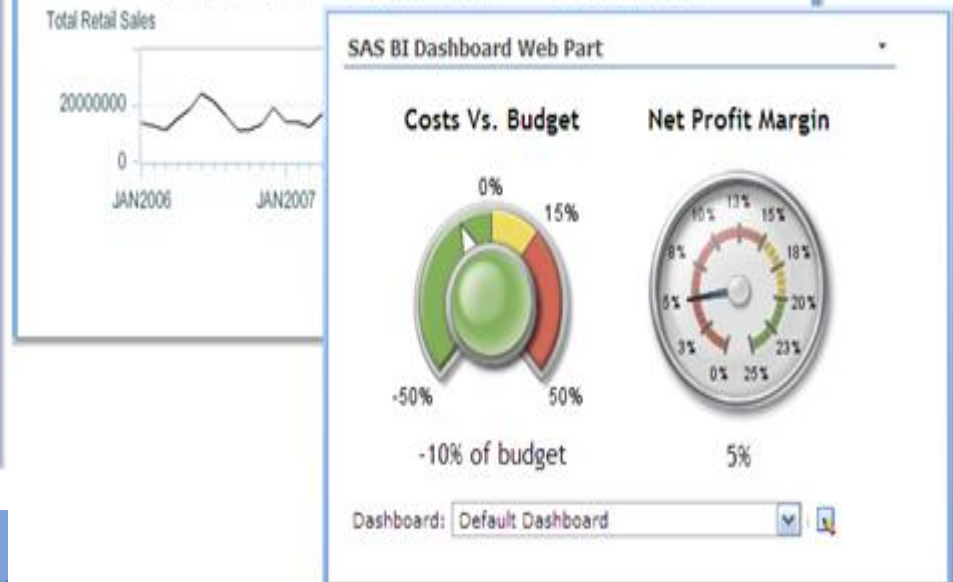
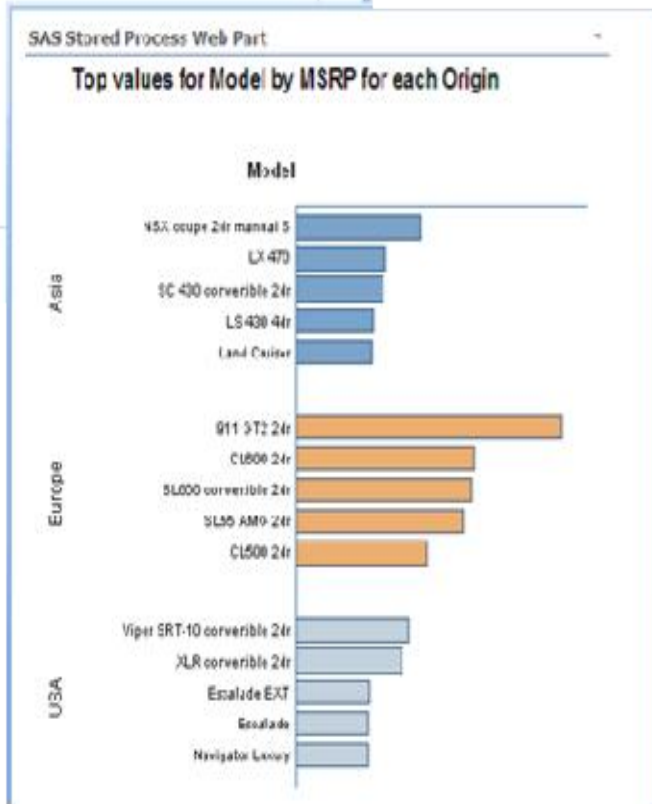
General Reset to Default

How many values to rank

Which value to measure

Report on which column

Across which category



MS Sharepoint - SAS

1. Luodaan uusi sivu

Create

Select an item to create a new list, library, discussion board, survey, page or site.
Hover over an item to view details.

Site Actions

- Create**
Add a new library, list, or web page to this website.
- Site Settings**
Manage site settings on this site.

Libraries	Communications	Tracking	Custom Lists	Web Pages
<ul style="list-style-type: none">Document LibraryForm LibraryWiki Page LibraryPicture LibrarySlide LibraryTranslation Management Library	<ul style="list-style-type: none">AnnouncementsContactsDiscussion Board	<ul style="list-style-type: none">LinksCalendarTasksProject TasksIssue TrackingSurvey	<ul style="list-style-type: none">Custom ListCustom List in Datasheet ViewLanguages and TranslatorsImport Spreadsheet	<ul style="list-style-type: none">Basic PageWeb Part Page

MS Sharepoint - SAS

2. Valitaan sivulle Web Partit

Version: You are editing the Shared Version of this page

SASForumFinland2010

Header

Add a Web Part

Body

Add a Web Part

Right Column

Add a Web Part

SAS Web Part

To link to content, open the tool pane and then type a URL in the Link text box.

SAS Web Part

Page Viewer

Appearance

Title

SAS Web Part

Height

Should the Web Part have a fixed height?

Yes 400 Pixels

No. Adjust height to fit zone.

Width

Should the Web Part have a fixed width?

Yes 400 Pixels

No. Adjust width to fit zone.

Chrome State

Minimized

Normal

Chrome Type

Default

Layout

Advanced

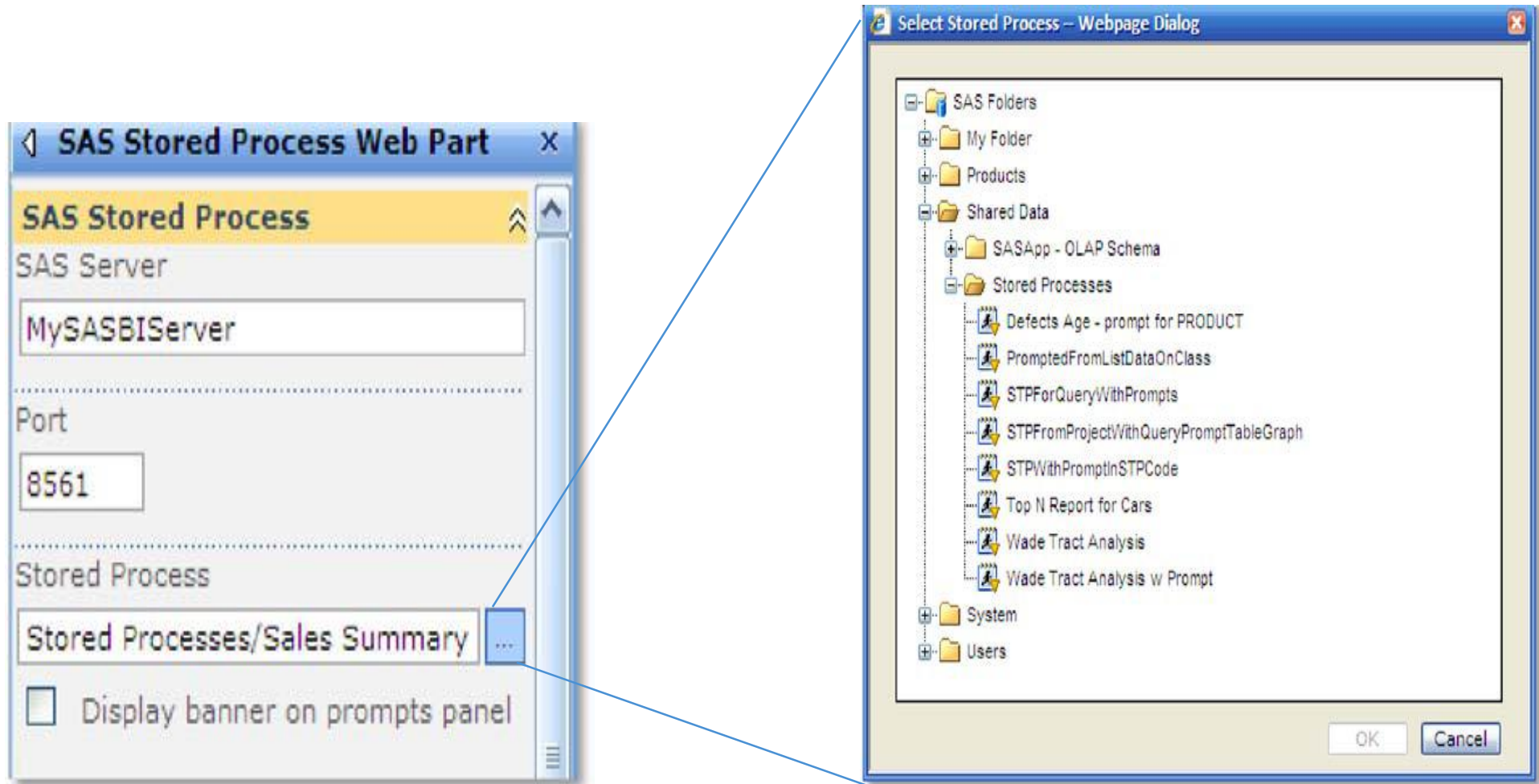
OK Cancel Apply

SAS Web Parts

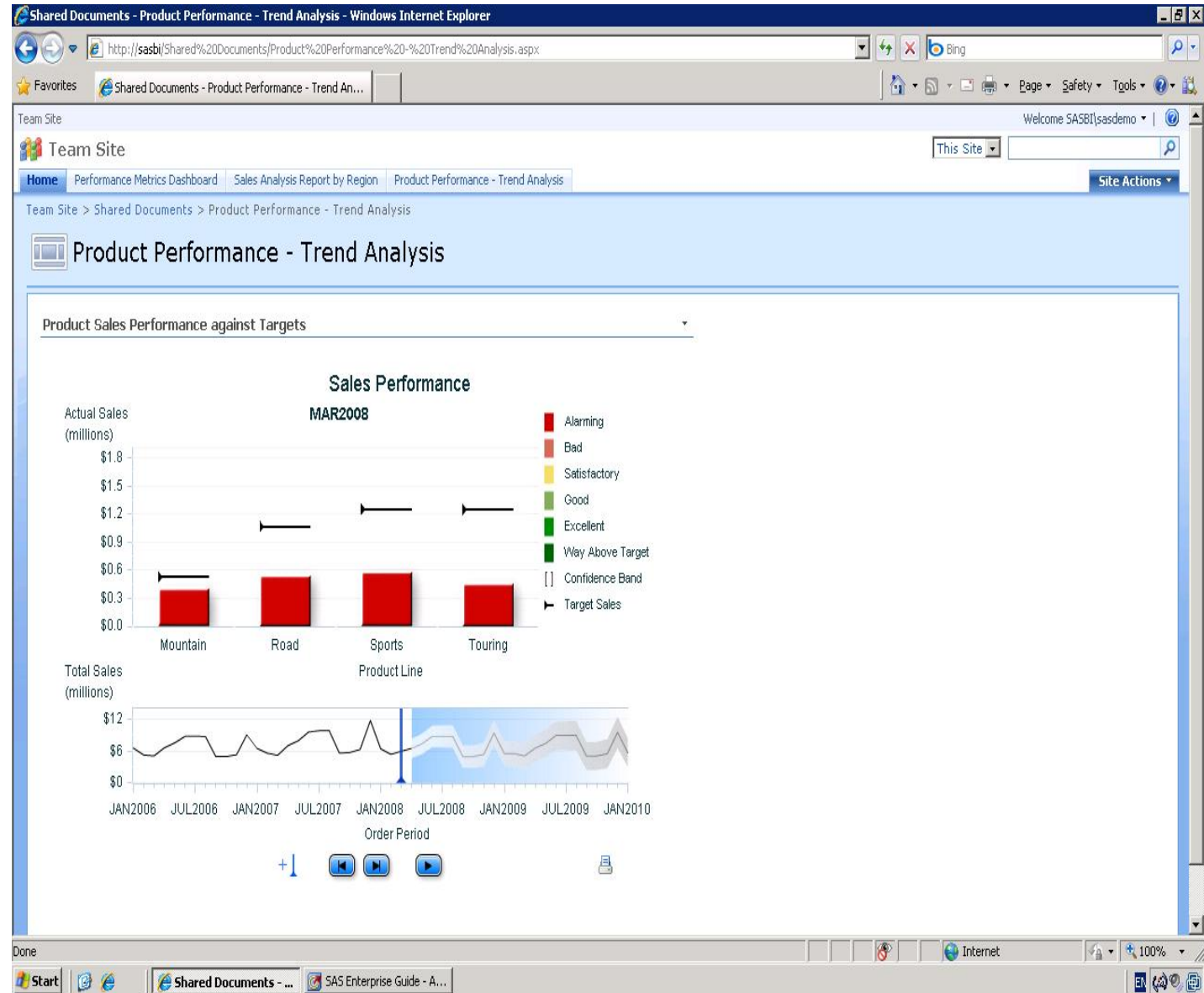
-  **SAS BI Dashboard Web Part**
Use this webpart to display a SAS BI Dashboard.
-  **SAS Stored Process Web Part**
Displays the results from a SAS Stored Process.

MS Sharepoint - SAS

3. Valitaan Web Partiin SAS sisältö



4. Nauti



Lisätietoja MS Sharepointista

- Heräsikö kiinnostus?
- Kuinka SASilla kirjoitetaan Sharepointtiin raportteja
- Kuinka Sharepoint dataa ladataan SASiin
- Lataa SAS Web Parts for Microsoft SharePoint,
http://www.sas.com/apps/demosdownloads/webparts_PROD_1.1_sysdep.jsp?packageID=000563
- Lisätietoja aiheesta
 - <http://blogs.sas.com/sasdummy/index.php?/archives/103-SAS-Web-Parts-for-Microsoft-Sharepoint.html#extended>
 - <http://support.sas.com/resources/papers/proceedings09/390-2009.pdf>



Pietari Koskela, Business advisor